



11 Solomon Court Sunbury VIC

4  2  2 

This inviting family home in the prestigious Killara Estate truly stands in a class of its own. Set on a generous 643m² (approx.) block in a peaceful court location, this property represents the pinnacle of family living. Thoughtfully designed with a split-level floor plan, the home balances warmth and spaciousness, featuring multiple living zones ideal for both relaxation and entertaining.

Positioned for ultimate convenience, it's within walking distance to the local general store, hairdressers, popular eateries, Killara Primary School, childcare facilities, and has a bus stop just across the road-offering the perfect setting for a growing family.

Inside, four well-sized bedrooms with brand new carpet, each with built-in robes, provide ample space, with the master suite boasting a walk-in robe and private ensuite for

Price : \$660,000 - \$710,000
Land Size : 643 sqm
View : <https://www.ypa.com.au/8182321>

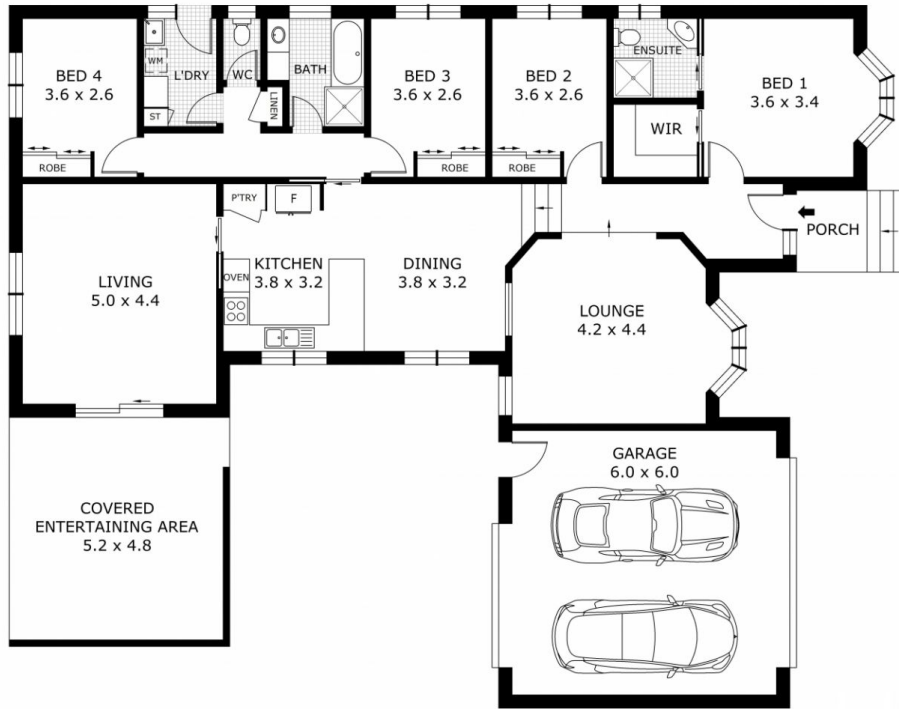


Lisa Totaro
0410 144 215



Cassandra Doria
0497 972 028

11 Solomon Court, Sunbury



Disclaimer: All images, views and diagrams are indicative only. Dimensions, areas and landscape are indicative and subject to change without notice. Purchasers should check the plans and specifications included in the terms of the contract of sale carefully prior to signing the contract.