



12 Church Street Beenleigh QLD

3 1 1

Welcome to 12 Church Street, Beenleigh - a freshly updated property with future growth potential! With "Low-Medium Density Residential - in the Apartment precinct" zoning, this home sits on a 435 m² block, making it a fantastic opportunity for investors, developers, or those seeking a place to call home in a thriving area. Positioned in Beenleigh, an area known for its expanding infrastructure and convenient location, this property is ready for immediate move-in or rental.

Whether you're considering redevelopment (subject to council approvals) or looking for a home with investment potential, this property offers flexible options. Currently vacant, it's ready for a new tenant with rental returns estimated at \$550 to \$600 per week.

Property Features:

? Three spacious bedrooms

? Main bathroom

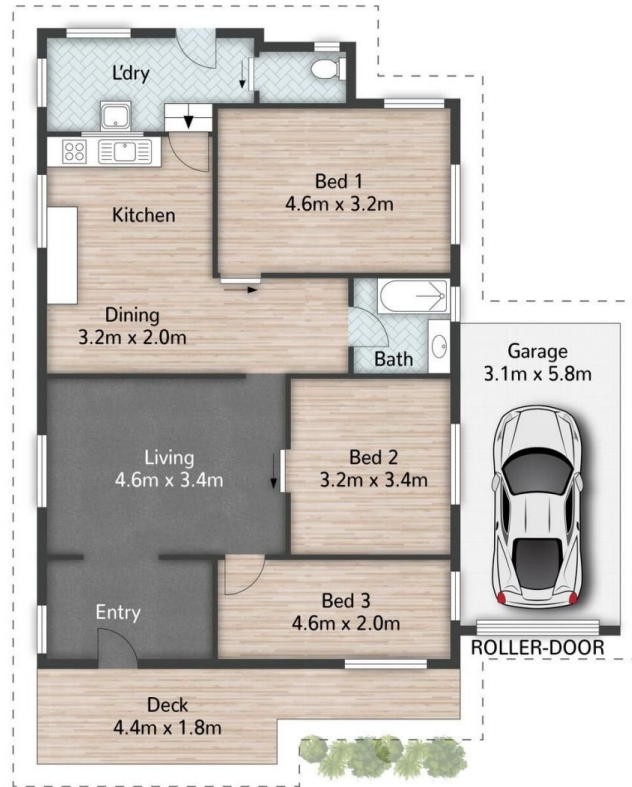
Price : JUST LISTED!!
Land Size : 435 sqm
View : <https://www.ypa.com.au/8184113>



Daniel Garcia
0416 565 417



Steven Spiteri
0423 428 079



12 Church Street **BEENLEIGH**

3 |
 1 |
 1 |
 129m²

All dimensions are approximate; they are subject to errors and inaccuracies and no liability will be accepted.
Plans are shown for marketing purposes only.

