



11 Wills Road Melton South VIC

3 1 10

This delightful property, set on a spacious 585m² (approx.) block, is perfectly suited for first-home buyers, investors, and families in search of a welcoming community. Positioned near top local schools such as Al Iman College, Staughton College, Melton South Primary School, and St. Anthony's Primary School, it offers a prime location for those prioritizing convenience. With easy access to the freeway, Melton Train Station, local bus routes, and scenic parks, this residence ensures seamless connectivity to the best of Melton.

Upon entry, you'll find a generous living area that exudes warmth and comfort?perfect for family gatherings and relaxation, complete with a split system for climate control. Adjacent to the living space is a bright meals area connected to a renovated kitchen. The kitchen showcases quality finishes, featuring a 40mm stone benchtop, tiled

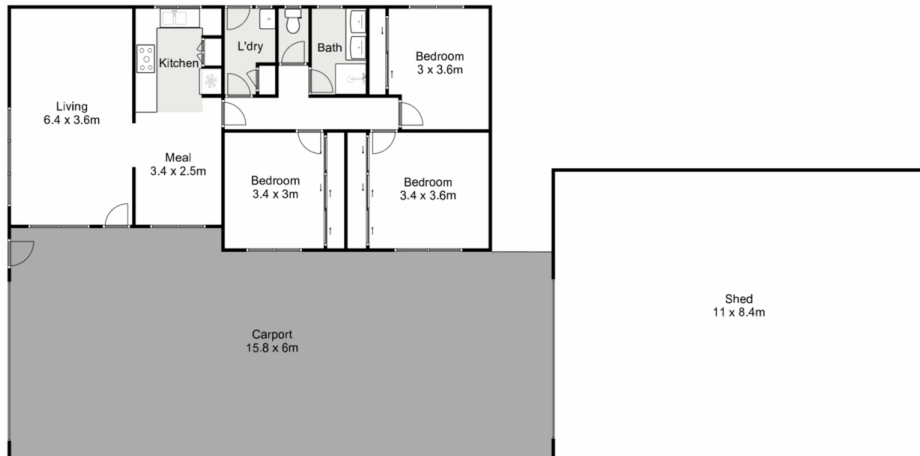
Price : \$539,000 - \$579,000
Land Size : 585 sqm
View : <https://www.ypa.com.au/8184628>



Shane Spiteri
0488 980 115



Monty Tyagi
0435 896 907



11 Wills Road, Melton South

YPA

Whilst every attempt has been made to ensure the accuracy of the floor plan contained here, measurements of doors, windows, rooms and any other items are approximate and no responsibility is taken for any error, omission, or mis-statement. This plan is for illustrative purposes only and should be used as such by any prospective purchaser. The services, systems and appliances shown have not been tested and no guarantee as to their operability or efficiency can be given.

