



24 Knebworth Drive Strathulloh VIC

2  1  1 

This lovely home will surpass all expectations and is positioned in an amazing location in the heart of Strathulloh. Located in a serene and quiet neighbourhood, this home is within a short distance to all major amenities such as: Athletics and sporting grounds, parks, Strathulloh Primary School, the newly opened St Francis College Campus, upcoming government funded schooling, Cobblebank Village Shopping Centre and Cobblebank Train Station and the eagerly awaited Melton Hospital this truly is the perfect location for the growing family.

This home offers glamorous ambience throughout in combination with all you can expect from the perfect home. As soon as you enter you are taken back by the immaculate condition. It just feels like home. Comprising of: two large bedrooms and with the master being complete with walk in robe and two way access into the modern

Price : \$429,000 - \$469,000

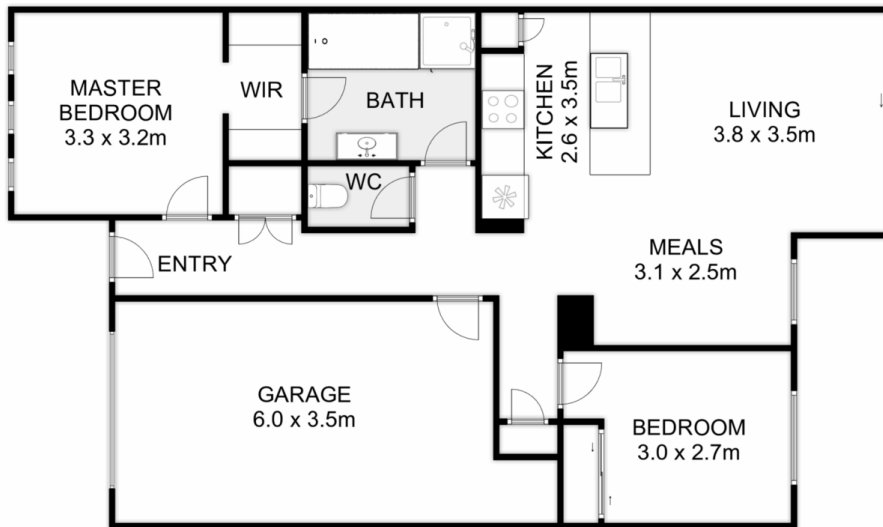
View : <https://www.ypa.com.au/8185783>



Ryan Anders
0434 900 300



Britteny Cooke
0426 211 338



24 Knebworth Drive, Strathulloh

Ypa

Whilst every attempt has been made to ensure the accuracy of the floor plan contained here, measurements of doors, windows, rooms and any other items are approximate and no responsibility is taken for any error, omission, or mis-statement. This plan is for illustrative purposes only and should be used as such by any prospective purchaser. The services, systems and appliances shown have not been tested and no guarantee as to their operability or efficiency can be given.

