



## 5 Veltins Way Strathtulloh VIC

4 🚗 2 🚚 5 🚗

Set on an impressive 524m<sup>2</sup> (approx.) block with complete side access, this residence offers a lifestyle of versatility and comfort. This property is the epitome of convenience, located close to all amenities, including Strathtulloh Primary School, Cobblebank Stadium, Cobblebank Village, and multiple other parks and sports centres.

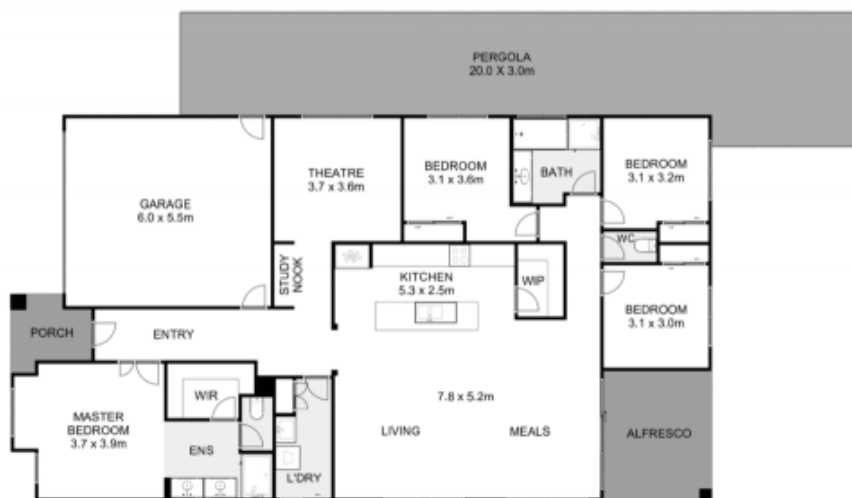
**Price** : \$699,000 - \$759,000  
**Land Size** : 524 sqm  
**View** : <https://www.ypa.com.au/8186048>

Upon entering the home, you are greeted with high ceilings creating a sense of open space that defines every aspect of this home. It features four bedrooms and two bathrooms, the master bedroom includes a walk-in robe and a full ensuite featuring stone bench tops, double vanity, and an oversized shower. The remaining three sizeable bedrooms provide ample storage solutions and are serviced by a central bathroom.



**Costa Rodriguez**  
0484 134 841

As you continue through the home you are greeted by a



## 5 Veltins Way, Strathtulloh



Whilst every attempt has been made to ensure the accuracy of the floor plan contained here, measurements of doors, windows, rooms and any other items are approximate and no responsibility is taken for any error, omission, or mis-statement. This plan is for illustrative purposes only and should be used as such by any prospective purchaser. The services, systems and appliances shown have not been tested and no guarantee as to their operability or efficiency can be given.

