



32 Cassidy Crescent WILLOW VALE QLD

4 2 2

From pink sunsets to early morning day break, this gorgeous home is positioned at the top of Willow Vale allowing you to experience uninterrupted views of the Gold Coast Hinterlands right from your living room.

Upon entry the grand proportions are evident with the spacious Master bedroom with ensuite and full walk in robe DOWNSTAIRS.

Heading upstairs the light filled living zones, ooze the homely feeling. Kitchen with walk in pantry equipped for the inner chef, media room, study and large living/dining area are all easily accessible from the remaining three bedrooms and are all oversized.

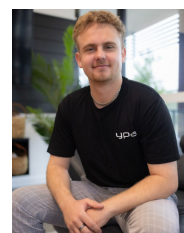
Seperate study nook make working from home a breeze.

Whilst the home itself is super functional and light and

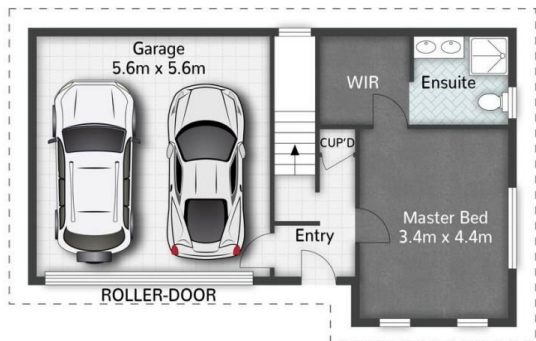
Price : JUST LISTED
Land Size : 588 sqm
View : <https://www.ypa.com.au/8187148>



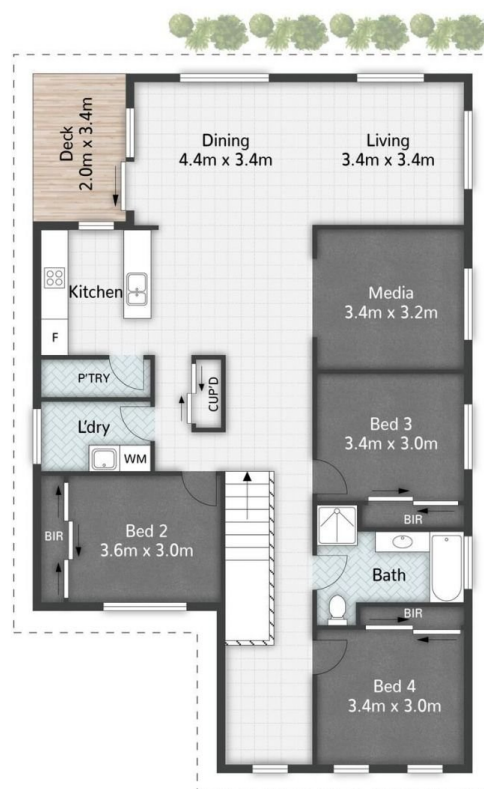
Steven Spiteri
0423 428 079



Tyler Crawford
0414 247 855



GROUND FLOOR



FIRST FLOOR



32 Cassidy Crescent **WILLOW VALE**

4 | 2 | 2 | 197m²

All dimensions are approximate; they are subject to errors and inaccuracies and no liability will be accepted.
Plans are shown for marketing purposes only.

