



1/5 Highfield Road McCrae VIC

3 2 2

Whatever your situation, this McCrae property offers the benefits of a wonderful relaxed style of living. With everything you need on the ground floor and extra bedrooms and a second living area upstairs, this floorplan works beautifully for all stages of life.

Located beachside of the freeway, it is an easy walk to the following:-

?McCrae Plaza ?The Beach ?The Bay Trail
?McCrae Lighthouse ?Yacht Club ?Local Restaurants

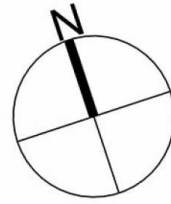
Downstairs:-

?Master bedroom with walk-in robe and full ensuite
?Light-filled open plan kitchen, dining and living with air conditioner
?Seamless indoor-outdoor entertaining with the entertaining deck

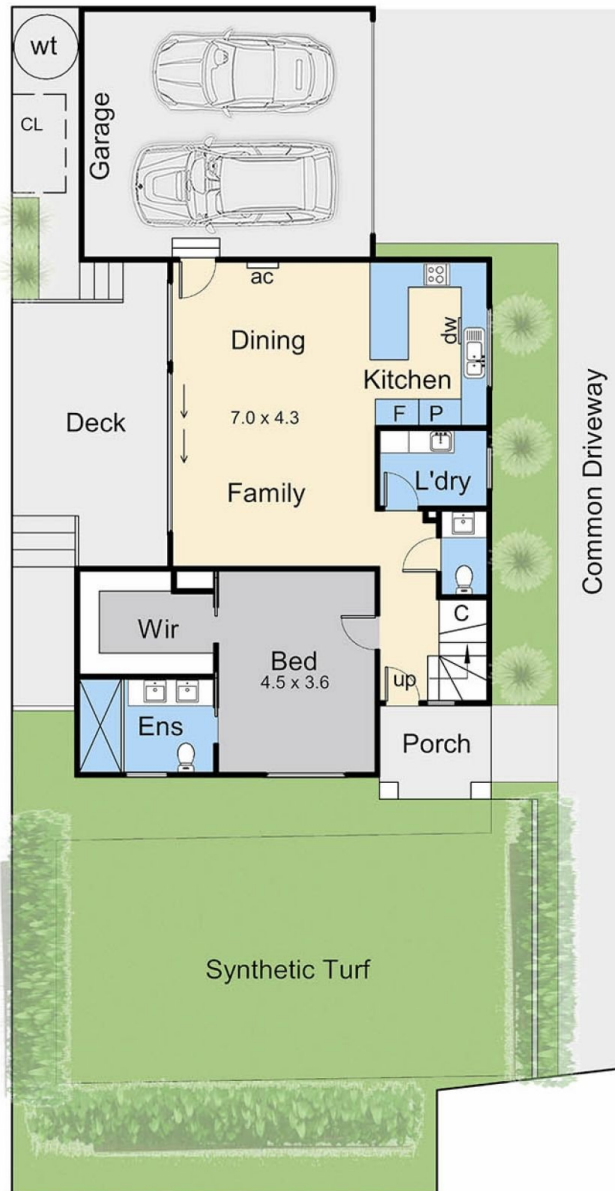
Price : \$1,195,000 - \$1,240,000
Land Size : 268 sqm
View : <https://www.ypa.com.au/8187768>



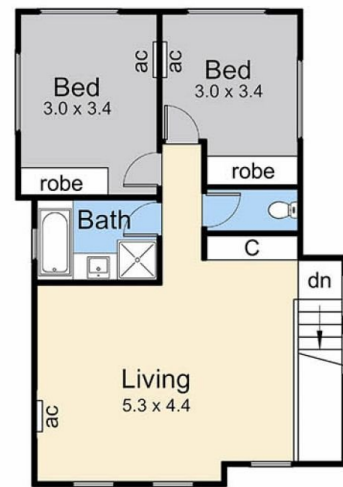
Mike Beaver
0413 528 961



Internal Living Area
- 17.1 squares (approx)



Lower Floor



Upper Floor

1,5 Highfield Road, McCrae

This floorplan is for illustration purposes only and no warranty is given to its accuracy. Purchasers are advised to carry out their own investigations. Produced by **realitywriters** (03) 5970 2222