



15 Grandview Crescent Darley VIC

3  2  2 

Located in a new estate of Darley, 15 Grandview Crescent presents a classic Hampton-style façade. This beautifully crafted home is just 16 months old and located just minutes from the Western Freeway entrance and local shopping precincts, providing convenience without compromise.

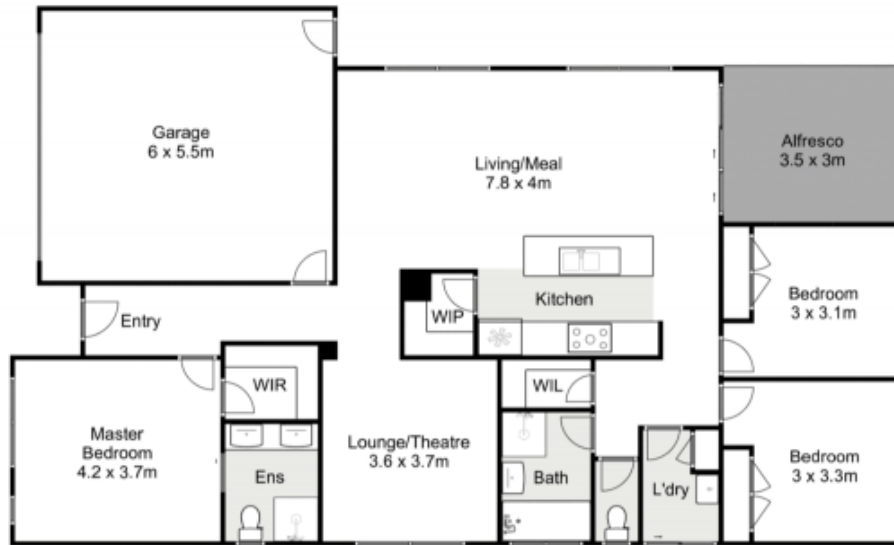
The exterior features exposed aggregate concreting stretching across three sides of the home, complemented by a landscaped front yard and convenient side access. Step inside to discover a spacious master bedroom, complete with a walk-in robe and an upgraded ensuite. This stunning ensuite is designed with floor-to-ceiling tiling, stone benchtops, a double vanity, plantation shutters, and a luxurious shower fitted with both rainfall and handheld shower heads.

The kitchen boasts stone waterfall benchtops, 900mm

Price : \$649,000 - \$699,000
Land Size : 663 sqm
View : <https://www.ypa.com.au/8189366>



Izabel Dusik
0421 833 010



15 Grandview Crescent, Darley



Whilst every attempt has been made to ensure the accuracy of the floor plan contained here, measurements of doors, windows, rooms and any other items are approximate and no responsibility is taken for any error, omission, or mis-statement. This plan is for illustrative purposes only and should be used as such by any prospective purchaser. The services, systems and appliances shown have not been tested and no guarantee as to their operability or efficiency can be given.

