



28/72 Jetty Road Rosebud VIC

2  1  1 

Nestled in the heart of Rosebud, right behind Rosebud Central Shops, with easy access to Public Transport, you'll have everything you need at your fingertips.

This cosy 2-bedroom unit is positioned among friendly neighbours and well-maintained picturesque gardens.

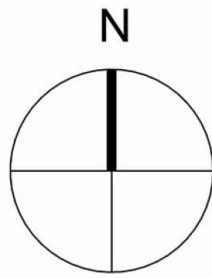
The open-plan living, kitchen & dining area allows for a low-maintenance and connected life-style. Serviced by a split-system air-conditioner, you'll be comfortable no matter the weather.

The walk-through family bathroom, includes a bathtub, separate shower, separate toilet & extra long vanity. The two bedrooms, both with built in robes, have direct access to the bathroom designed with convenience in mind.

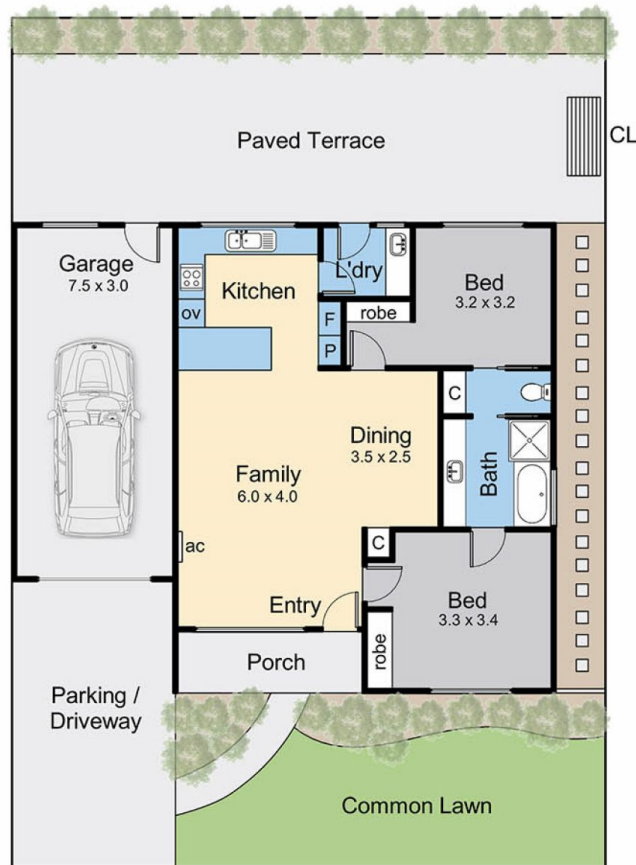
Price : \$545,000 - \$595,000
Land Size : 183 sqm
View : <https://www.ypa.com.au/8191197>



Michael Dimech
0417 399 511



Internal living area = 9 squares (approx)
 Garage area = 2 squares (approx)
 Porch area = 1 square (approx)
 Paved terrace area = 5 squares (approx)
 Total area = 17 squares (approx)



Floor Plan

28/72 Jetty Road, Rosebud

This floorplan is for illustration purposes only and no warranty is given to its accuracy. Purchasers are advised to carry out their own investigations. Produced by **realitywriters** (03) 5970 2222