



2 Pengana Street Rosebud VIC

5 2 2

MODERN COASTAL LUXURY - AMAZING SPACE - GREAT LOCATION

Imagine coming home to this stunning, nearly new residence, just steps from the beach and local shopping, where every inch has been designed for family comfort, luxury, and convenience. Built only approx. two years ago and boasting approximately 40 squares of space, this magnificent two-level home is tailor-made for large families seeking a blend of coastal living and modern elegance.

Space and Comfort for the Whole Family: This expansive home features five large bedrooms, each equipped with walk-in robes, providing plenty of space and privacy for everyone. The master suite is located on the ground floor and feels like a private sanctuary, complete with a luxurious ensuite that includes double vanities, a walk-in shower, and

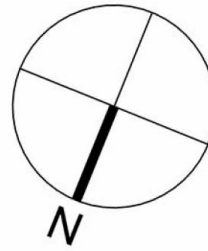
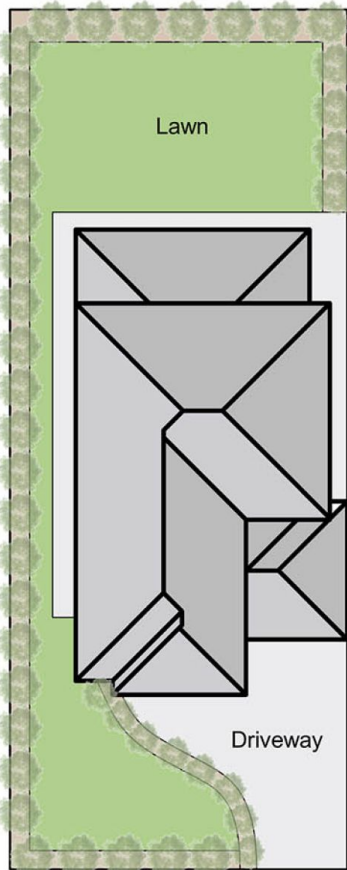
Price : \$1,395,000 - \$1,495,000
Land Size : 604 sqm
View : <https://www.ypa.com.au/8191360>



Elke Remscheid
0423 211 315

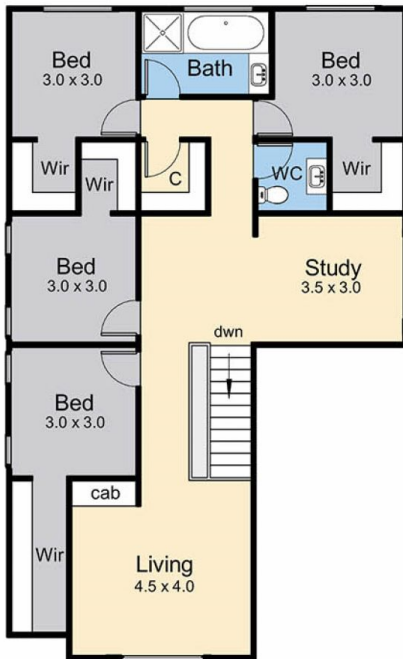


Ryan Oswald
0402720822

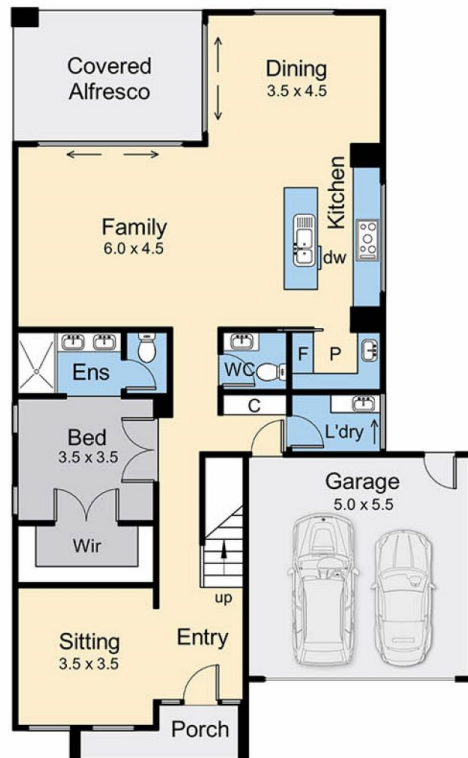


Internal area = 27 squares (approx)
 Garage area = 3.8 squares (approx)
 Alfresco area = 2.5 squares (approx)
 Total area = 33.3 squares (approx)

Site Plan



Upper Floor



Lower Floor

2 Pengana Street, Rosebud

This floorplan is for illustration purposes only and no warranty is given to its accuracy. Purchasers are advised to carry out their own investigations. Produced by **realitywriters** (03) 5970 2222